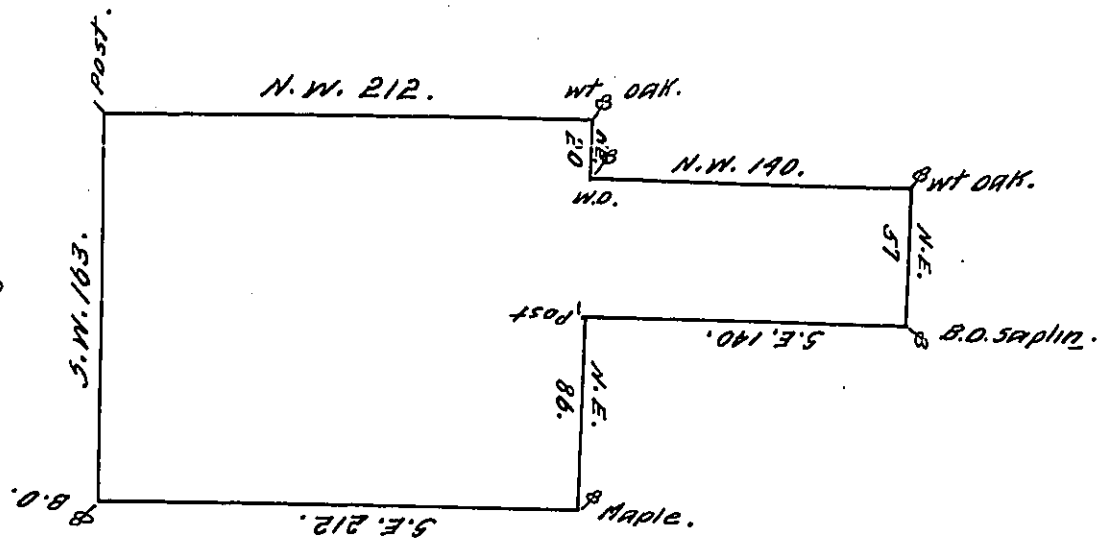


Sold to
Philip Helwine
See Page 66



By virtue of a Warrant from the Commissioners of Property dated the thirtieth day of October 1730. Surveyd and laid out to James Steel a Certain Tract of Land Situate in Oley in the County of Philada. begining at Post in the Line of Philip Culevines Land thence by that & vacant Land Northwest. Two hundred and Twelve perches to a white oak thence by vacant Land North East Twenty perches to a white oak Thence by vacant Land Northwest one hundred & forty perches to a white oak Thence by vacant Land, North East fifty Seven perches to a black oak Saplin. Thence by vacant Land South East one hundred and forty perches to a Post Thence, ^{by vacant Land} North East Eighty Six perches to a Maple tree. Thence by vacant Land South East Two hundred & Twelve perches to a Black oak Standing in the line of Arnold Huffnail's Land thence by the same South west one hundred Sixty three perches to the place of beginning Containing Two hundred & fifty acres with usual allowance

Surveyd february 22^d. 1730.

Nicholas Scull.

IN TESTIMONY that the above is a copy of the original remaining on file in the Department of Internal Affairs of Pennsylvania, made conformably to an Act of Assembly approved the 16th day of February, 1833, I have hereunto set my Hand and caused the Seal of said Department to be affixed at Harrisburg, this twelfth day of December 1910

Henry Horck
Secretary of Internal Affairs.